

VH3V 系列高压球阀

VH3V Series High Pressure Ball Valve

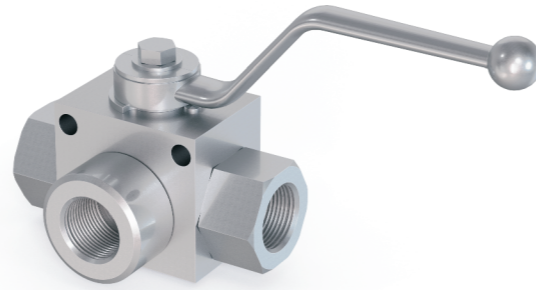
型号说明 Model Code

VH3V- G1/2- 13 - L N - 1 11 1 - 01 - 1
 1 2 3 4 5 6 7 8 9 10 11

- 1.系列代号: VH3V系列;
- 2.连接代号: G**, M**, **LR, **SR, PT**, NPT**;
- 3.公称口径: 06, 10, 13, 16, 20, 25;
- 4.球芯机能: L-L型机能球阀、T-T型机能球阀;
- 5.阀体工作油口(三通球阀与直通球阀区别的油口)连接螺纹:
N-内螺纹、W-外螺纹;
- 6.阀体、接头材料: 1-45#, 3-316不锈钢;
- 7.球芯、阀锁材料: 1-45#, 3-316不锈钢;
- 8.球封材料: 1-POM(聚甲醛)、2-PTFE(聚四氟乙烯);
- 9.阀体与接头和阀锁处密封材料: 1-NBR(丁腈橡胶)、2-FPM/FKM(氟橡胶);
- 10.手柄形式: 01-C型锌合金曲手柄、02-B型锌合金曲手柄、09-不带手柄
- 11.表面处理: 1-蓝白三价铬; 2-锌镍合金

备注: 压力参数对应产品的材料为碳钢。
 材料1111为常规组合, PTFE材料使用时最高工作压力不超过100bar
 (其它特殊组合型式请咨询)。

- 1.Series Code:VH3V series
 - 2.Joint Code:G**, M**, **LR, **SR, PT**, NPT**;
 - 3.Nominal Diameter:06, 10, 13, 16, 20, 25;
 - 4.Ball Valve Enginer:L-L Type, T-T Type
 - 5.working oil port(differentiate between three way to straight way) Join Thread
 - 6.Valve body/joint material:1-carbon steel, 3-316 stainless steel
 - 7.Ball body/ Valve stem material:1-carbon steel, 3-316 stainless steel
 - 8.Ball sealing material:1-POM 2-PTFE
 - 9.Sealing material(Sealing material of joint/valve stem):1-NBR 2-FPM/FKM
 - 10.Handle Type:01-C type zinc alloy crooked handle
02-B type zinc alloy crooked handle
09-without handle
 - 11.Surface Treatment: 1- SILVER ZINC PLATED
- PS:The Material Pressure parameters corresponding to the product is carbon steel.
 1111 is the normal mix ,the PN no more than 100bar when using PTFE.
 (other specifications please contact us)



连接口略图 Connection port sketch	简略型号 Brief Model	PN (bar)	DN	LW	RA	d1(D2)	i	L	L1	B	L2	h1	h2	SW1	SW2	D	h3	L3	D1	C
M	VH3V-M16×1.5	500	06	06	11	M16×1.5	11	69	40	26	31.5	13.5	35	09	22	5.5	4.8	26	6	4
	VH3V-M27×1.5	500	10	10	20	M27×1.5	12	76	42	32	31.5	16	40	09	27	5.3	5.8	31	8	4
	VH3V-M36×2	400	20	20	30	M36×2	15	103	60	48	48.5	25	58	12	41	6.5	6	44	15	5.5
	VH3V-M42×2	350	25	23	35	M42×2	18	116	65	57	50.5	28.5	65	12	50	8.5	7	53.5	22	5

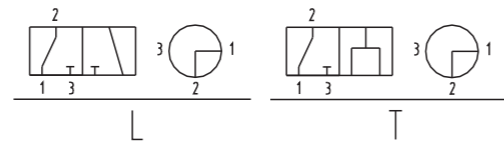
简略型号 Brief Model	PN (bar)	DN	LW	RA	d1(D2)	i	L	L1	B	L2	h1	h2	SW1	SW2	D	h3	L3	D1	C
VH3V-G 1/4	500	06	06	/	G 1/4	14	69	40	26	31.5	13.5	35	09	22	5.5	4.8	26	6	/
VH3V-G 3/8	500	10	10	/	G 3/8	14	72	42	32	31.5	16	40	09	27	5.3	5.8	31	8	/
VH3V-G 1/2	500	13	12	/	G 1/2	16	83	48	35	38.5	18	45	09	30	6.5	6	35	12	/
VH3V-G 3/4	400	20	20	/	G 3/4	18	93	60	50	48.5	23	58	12	41	6.5	6	44	15	/
VH3V-G 1	350	25	25	/	G 1	21	115	65	57	50.5	27.5	65	12	46	8.5	7	53.5	22	/

简略型号 Brief Model	PN (bar)	DN	LW	RA	d1(D2)	i	L	L1	B	L2	h1	h2	SW1	SW2	D	h3	L3	D1	C
VH3V-NPT 1/4	500	06	06	/	NPT 1/4	14	69	40	26	31.5	13.5	35	09	22	5.5	4.8	26	6	4
VH3V-NPT 3/8	500	10	10	/	NPT 3/8	14	72	42	32	31.5	16	40	09	27	5.3	5.8	31	8	4
VH3V-NPT 1/2	500	13	12	/	NPT 1/2	14	83	48	35	38.5	18	45	09	30	6.5	6	35	12	3
VH3V-NPT 3/4	400	20	20	/	NPT 3/4	18	95	60	50	48.5	23	58	12	41	6.5	6	44	15	5.5
VH3V-NPT 1	350	25	25	/	NPT 1	21	113	65	57	50.5	27.5	65	12	46	8.5	7	53.5	22	5

简略型号 Brief Model	PN (bar)	DN	LW	RA	d1(D2)	i	L	L1	B	L2	h1	h2	SW1	SW2	D	h3	L3	D1	C
VH3V-08LR	500	06	06	08	M14×1.5	10	67	40	26	31.5	13.5	35	09	22	5.5	4.8	26	6	4
VH3V-10LR	500	08	08	10	M16×1.5	11	74	42	32	31.5	16	40	09	27	5.3	5.8	31	8	4
VH3V-12LR	500	10	10	12	M18×1.5	11	74	42	32	31.5	16	40	09	27	5.3	5.8	31	8	4
VH3V-15LR	500	13	12	15	M22×1.5	12.5	82	48	35	38.5	18	45	09	30	6.5	6	35	12	3
VH3V-18LR	500	13	12	18	M26×1.5	12	82	48	35	38.5	18	45	09	30	6.5	6	35	12	3
VH3V-22LR	400	20	19	22	M30×2	14	101	60	50	48.5	23	58	12	41	6.5	6	44	15	5.5
VH3V-28LR	350	25	24	28	M36×2	14	108	65	57	50.5	27.5	65	12	46	8.5	7	53.5	22	5

简略型号 Brief Model	PN (bar)	DN	LW	RA	d1(D2)	i	L	L1	B	L2	h1	h2	SW1	SW2	D	h3	L3	D1	C
VH3V-10SR	500	06	06	10	M18×1.5	12	73	40	26	31.5	13.5	35	09	22	5.5	4.8	26	6	4
VH3V-14SR	500	10	10	14	M22×1.5	14	80	42	32	31.5	16	40	09	27	5.3	5.8	31	8	4
VH3V-16SR	500	13	12	16	M24×1.5	14	86	48	35	38.5	18	45	09	30	6.5	6	35	8	4
VH3V-20SR	500	13	12	20	M30×2	16	90	48	35	38.5	18	45	09	30	6.5	6	35	12	3
VH3V-25SR	400	20	20	25	M36×2	18	109	60	50	48.5	23	58	12	41	6.5	6	44	15	5.5
VH3V-30SR	350	25	25	30	M42×2	20	120	65	57	50.5	27.5	65	12	46	8.5	7	53.5	22	5

图形符号 Hydraulic Schematic



外形尺寸 Overall Dimension

1、型式1: 三个油口均为相同连接型式

2、型式2:

