

## KH4 型四通球阀

### KH4 Series 4 Way Ball Valve

#### 型号说明 Model Code

KHB-  $\frac{KH4}{1}$  -  $\frac{DN^*}{2}$  -  $\frac{B}{3}$  -  $\frac{*}{4}$  -  $\frac{*}{5}$

- 1.系列代号：四通球阀
- 2.公称口径：04、06、08、10、12、16、20 mm
- 3.连接方式：板式连接
- 4.球阀机能：T、X
- 5.材料代号：

阀体接头材料：1-碳钢 3-不锈钢

球轴材料：1-碳钢 3-不锈钢

球体密封材料：1-POM

接头体和球轴密封圈材料：2-丁晴橡胶 4-氟橡胶

常规材料组合：1112

1.Series Code:4 Way Ball Valve

2.Nominal Diameter:04、06、08、10、12、16、20 mm

3.Connection Type:Sub-plate mounting

4.Ball Valve Engineer:T、X

5.Material Code:

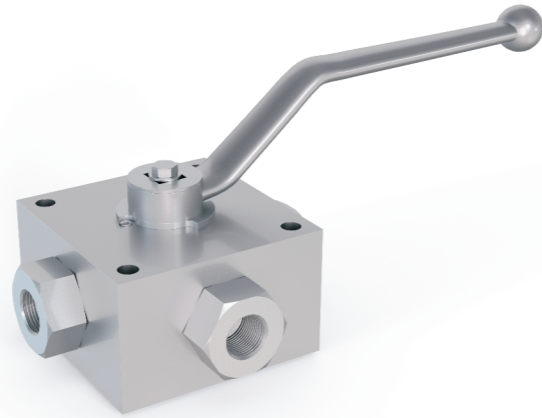
Valve body/joint material:1-carbon steel 3-stainless steel

Ball shaft material:1-carbon steel 3-stainless steel

Ball body sealing material:1-POM

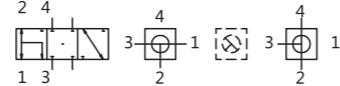
Joint&Ball shaft O-ring material:2-NBR 4-FPM

General Material Assembled:1112

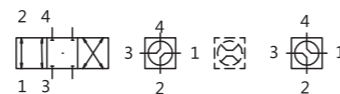


#### 图形符号 Hydraulic Schematic

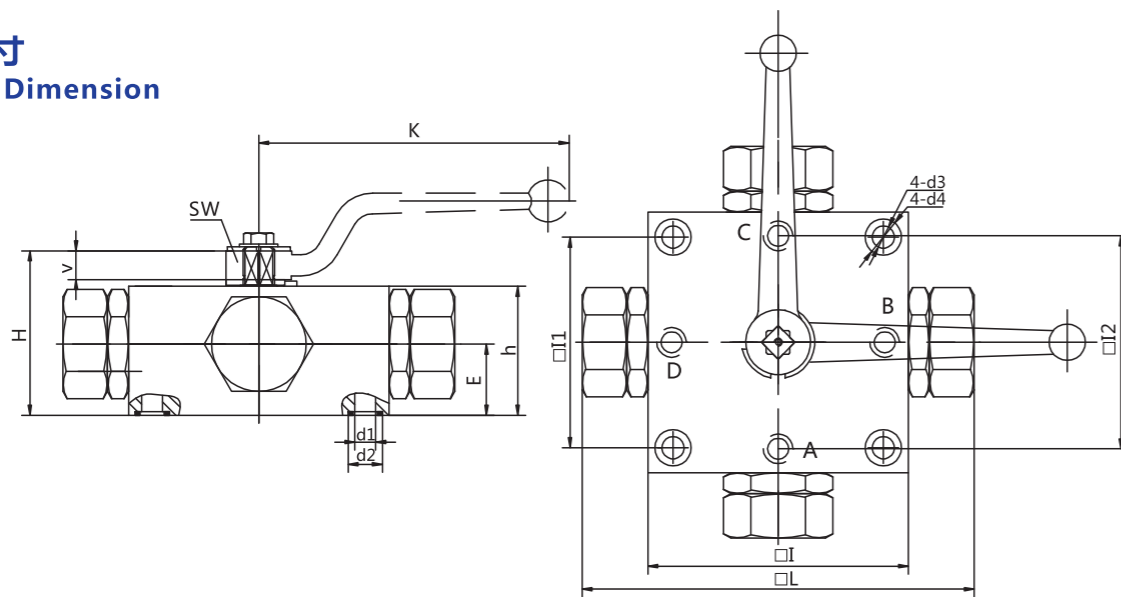
四通球阀 T形



四通球阀 X形



#### 外形尺寸 Overall Dimension



型号 Model	L	L1	L2	L	H	h	E	v	SW	K	d1	d2	d3	d4
BLV - KH4 - DN06 - B	90	70	68.6	102	58	40	22	13	12	160	6	14	11	18
BLV - KH4 - DN10 - B	99	80	81	149	62.5	57	31	11	9	130	8	14.8	8.5	14
BLV - KH4 - DN13 - B	140	90	115.4	154	78	60	31	14	14	200	13	19.8	13.5	20
BLV - KH4 - DN20 - B	171	100	137	184	88	67	36.5	16.5	17	320	18	27.9	13.5	20
BLV - KH4 - DN25 - B	205	115	162	225	96	75	40.5	16.5	17	320	23	31.9	18	26
BLV - KH4 - DN32 - B	260	148.5	180	288	147	115	62	26	22	600	32	39.9	22	33
BLV - KH4 - DN40 - B	301	155.5	206	332	156	125	65	25	22	600	38	55.9	26	40

## KH4 型四通球阀

### KH4 Series 4 Way Ball Valve

#### 型号说明 Model Code

KHB-  $\frac{KH4}{1}$  -  $\frac{DN^*}{2}$  -  $\frac{*}{3}$  -  $\frac{*}{4}$  -  $\frac{*}{5}$

- 1.系列代号：四通球阀
- 2.公称口径：04、06、08、10、12、16、20 mm
- 3.连接方式：螺纹规格
- 4.球阀机能：T、X
- 5.材料代号：

阀体接头材料：1-碳钢 3-不锈钢

球轴材料：1-碳钢 3-不锈钢

球体密封材料：1-POM

接头体和球轴密封圈材料：2-丁晴橡胶 4-氟橡胶

常规材料组合：1112

1.Series Code:4 Way Ball Valve

2.Nominal Diameter:04、06、08、10、12、16、20 mm

3.Connection Type:Sub-plate Mounting

4.Ball Engineer:T、X

5.Material Code:

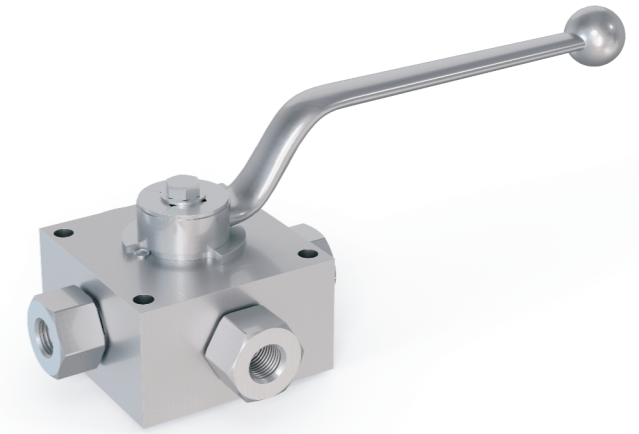
Valve body/joint material:1-carbon steel 3-stainless steel

Ball shaft material:1-carbon steel 3-stainless steel

Ball body sealing material:1-POM

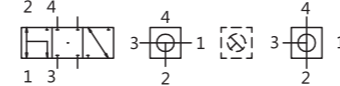
Joint&Ball shaft O-ring material:2-NBR 4-FPM

General Material Assembled:1112

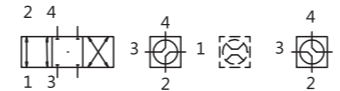


#### 图形符号 Hydraulic Schematic

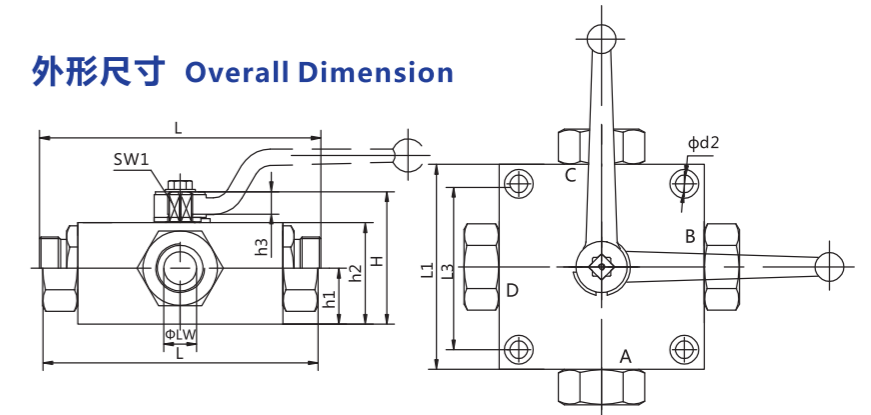
四通球阀 T形



四通球阀 X形



#### 外形尺寸 Overall Dimension



连接口略图 Connection port sketch	简略型号 Brief Model	DN	LW	RA	d1	i	L	L1	L3	H	h1	h2	d2	SW1	SW2	
M	BLV-KH4-DN04-M12X1.25	04	5	5	8	M12×1.25	10	105	70	55	57	22	40	6.5	12	24
	BLV-KH4-DN06-M16X1.5	06	5	5	11	M16×1.5	11	114	70	55	57	22	40	6.5	12	24
	BLV-KH4-DN08-M22X1.5	08	9	9	16	M22×1.5	12	116	80	65	67.5	27	50	6.5	12	30
	BLV-KH4-DN10-M27X1.5	10	9	9	20	M27×1.5	12	144	80	65	67.5	27	50	6.5	14	30
	BLV-KH4-DN16-M30X1.5	16	12	12	24	M30×1.5	13	144	100	80	77.5	31	60	6.5	14	36
G	BLV-KH4-DN20-M36X2	20	18	18	30	M36×2	15	166	100	85	92	36	73	9	17	46
	BLV-KH4-DN04-G1/8	04	5	5		G 1/8	10	100	70	55	57	22	40	6.5	12	24
	BLV-KH4-DN06-G1/4	06	6	5		G 1/4	14	100	70	55	56.5	22	40	6.5	12	24
	BLV-KH4-DN10-G3/8	10	9	9		G 3/8	14	115	80	65	67.5	27	50	6.5	14	30
	BLV-KH4-DN16-G1/2	16	12	12		G 1/2	16	135	100	80	78.5	31	60	9	14	36
LR	BLV-KH4-DN20-G3/4	20	16	18		G 3/4	18	144	100	85	90.5	36	72	9	14	41
	BLV-KH4-DN04-06LR	04	5	5	6	M12×1.5	10	105	70	55	57	22	40	6.5	12	24
	BLV-KH4-DN06-08LR	06	5	5	8	M14×1.5	10	105	70	55	57	22	40	6.5	12	24
	BLV-KH4-DN08-10LR	08	9	9	10	M16×1.5	11	114	80	65	67.5	27	50	6.5	12	30
	BLV-KH4-DN10-12LR	10	9	9	12	M18×1.5	11	114	80	65	67.5	27	50	6.5	14	30
LR	BLV-KH4-DN12-15LR	12	12	12	15	M22×1.5	12	136	100	80	77.5	31	60	6.5	14	36
	BLV-KH4-DN16-18LR	16	12	12	18	M26×1.5	12	136	100	80	77.5	31	60	9	14	36
	BLV-KH4-DN20-22LR	20	18	18	22	M30×2	14	143	100	85	92.5	36	73	9	17	46
	BLV-KH4-DN04-08SR	04	5	5	8	M16×1.5	12	105	70	55	57	22	40	6.5	14	24
	BLV-KH4-DN06-10SR	06	5	5	10	M18×1.5	12	105	70	55	57	22	40	6.5	12	24
	BLV-KH4-DN08-12SR	08	9	9	12	M20×1.5	12	116	80	65	67.5	27	50	6.5	12	30
	BLV-KH4-DN10-14SR	10	9	9	14	M22×1.5	14	120	80	65	67.5	27	50	6.5	14	30
	BLV-KH4-DN12-16SR	12	12	12	16	M24×1.5	14	140	100	80	77.5	31	60	6.5	14	36
	BLV-KH4-DN16-20SR	16	12	12	20	M30×2	16	144	100	80	77.5	31	60	9	14	36
	BLV-KH4-DN20-25SR	20	18	18	25	M36×2	16	151	100	85	92	36	73	9	17	46