

BLV-SDBF18-4/1-35(BLV-4MDN18/35-A)型上车多路阀

BLV-SDBF18-4/1-35(BLV-4MDN18/35-A) Multiple Directional Control Valve

技术参数 Technical Specifications

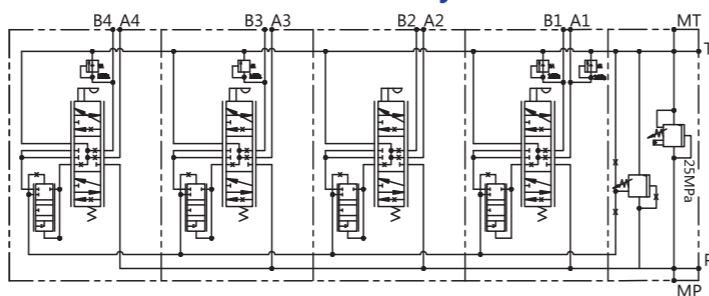
P口流量:80L/min

额定压力:25MPa

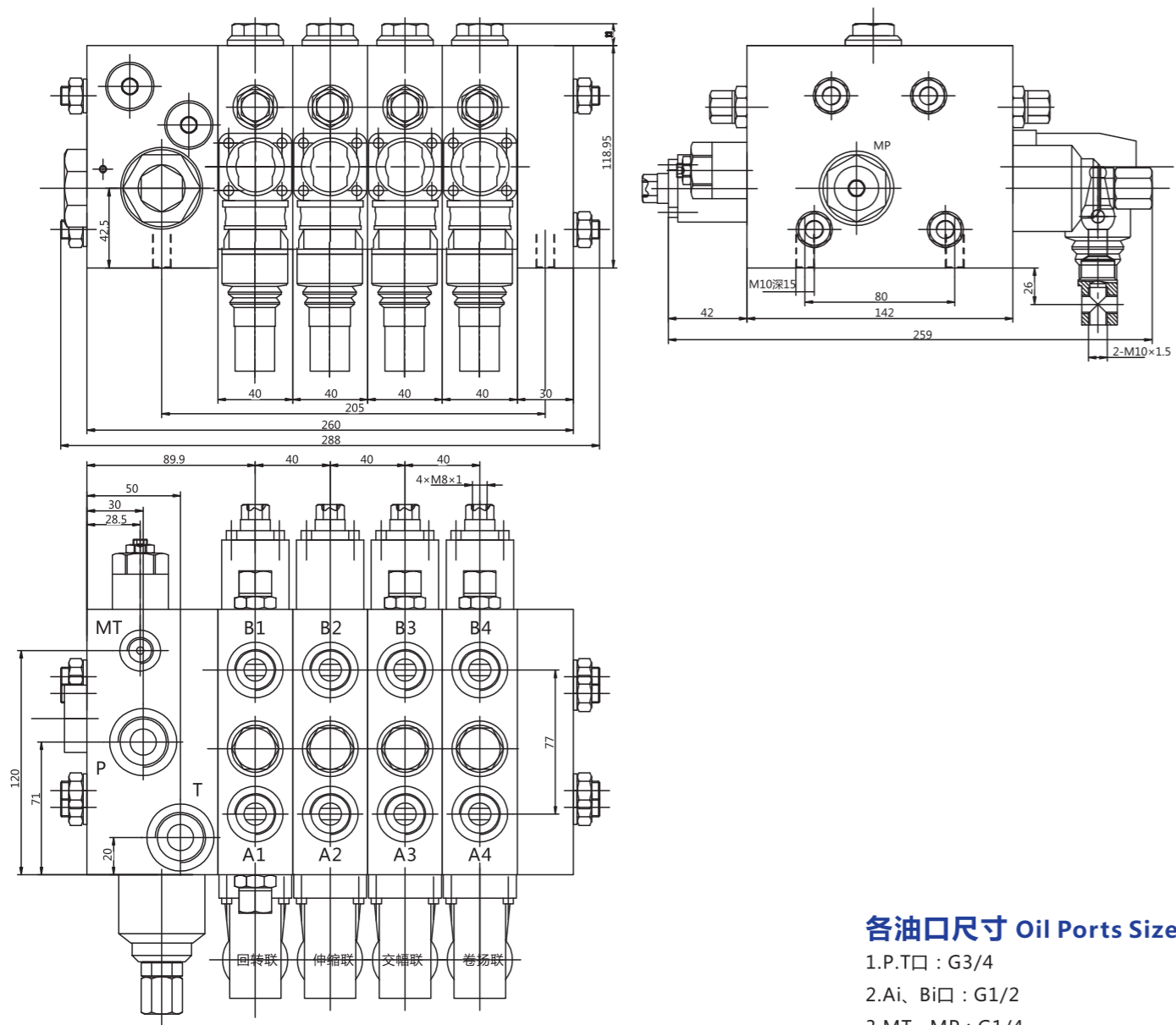
P Port Flow Rate: 80L/min

Rated Pressure: 25MPa

液压原理图 Hydraulic Schematic



外形尺寸 Overall Dimension



各油口尺寸 Oil Ports Size

- 1.P、T口 : G3/4
- 2.Ai、Bi口 : G1/2
- 3.MT、MP : G1/4

BLV-SDF20-4/2-25型上车多路阀

BLV-SDF20-4/2-25 Multiple Directional Control Valve

技术参数 Technical Specifications

额定压力 : 25MPa ;

P1口流量80L/min P2口流量100L/min;

主起升阀合流流量Q=180L/min;

多路阀中位压力损失P≤0.8MPa;

多路阀滑阀操纵力 : F≤430N.

Rated Pressure: 25MPa

P1 Port Flow: 80L/min, P2 Port Flow: 100L/min

Main lifting valve flow : Q=180L/min;

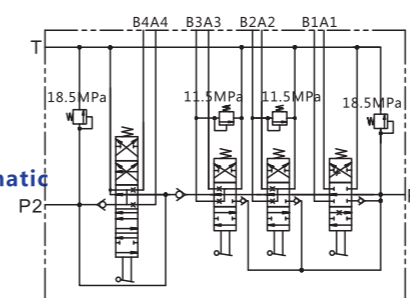
Pressure loss at center position : P≤0.8MPa

Slide valve of multiple branch circuit operating force : F≤430N

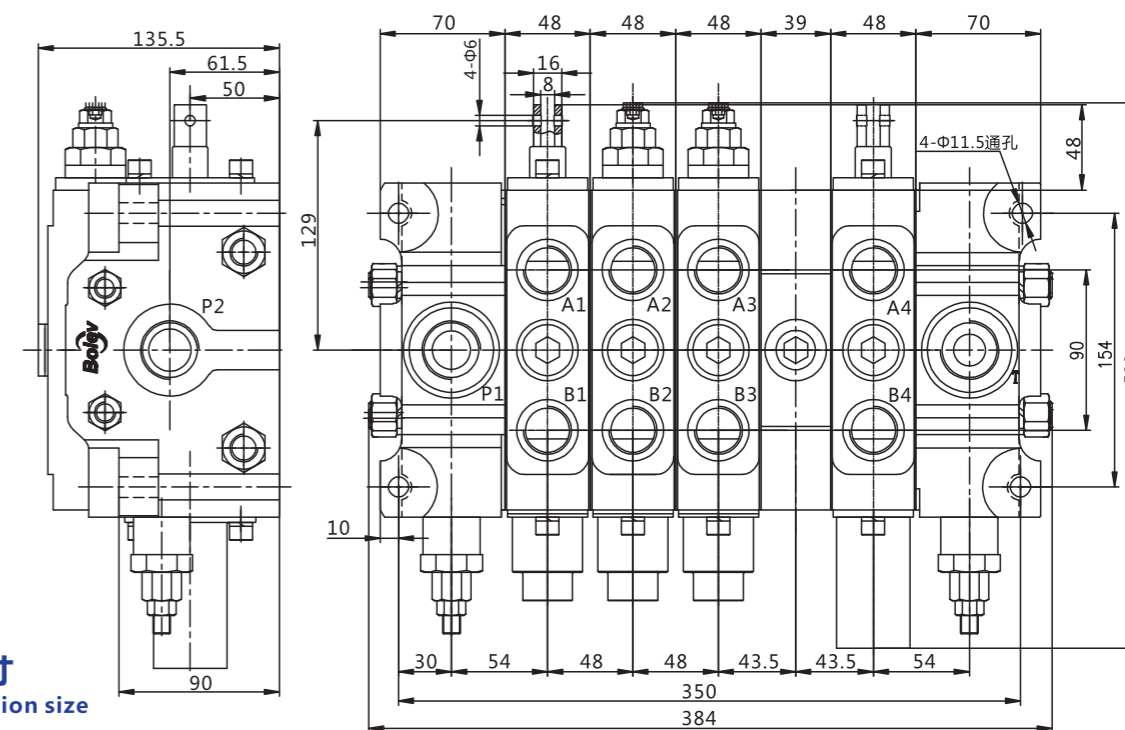


机能符号

Hydraulic Schematic



外形尺寸 Overall Dimension



油口连接尺寸

Oil Port connection size

- M33X2-6H: P1、P2、T
M33X2-6H: A1、B1、A2、B2、A3、B3、A4、B4