

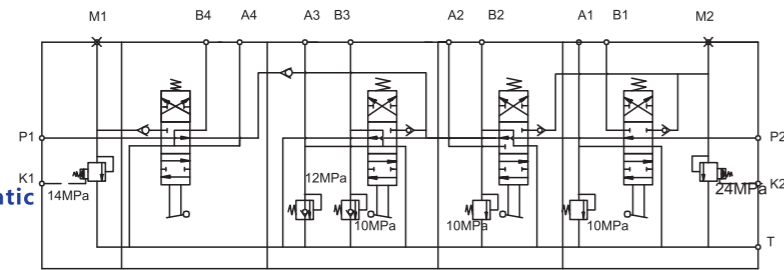
BLV-SDF20-4/2C-25 型上车多路阀

BLV-SDF20-4/2C-25 Multiple Directional Control Valve

技术参数 Technical Specifications

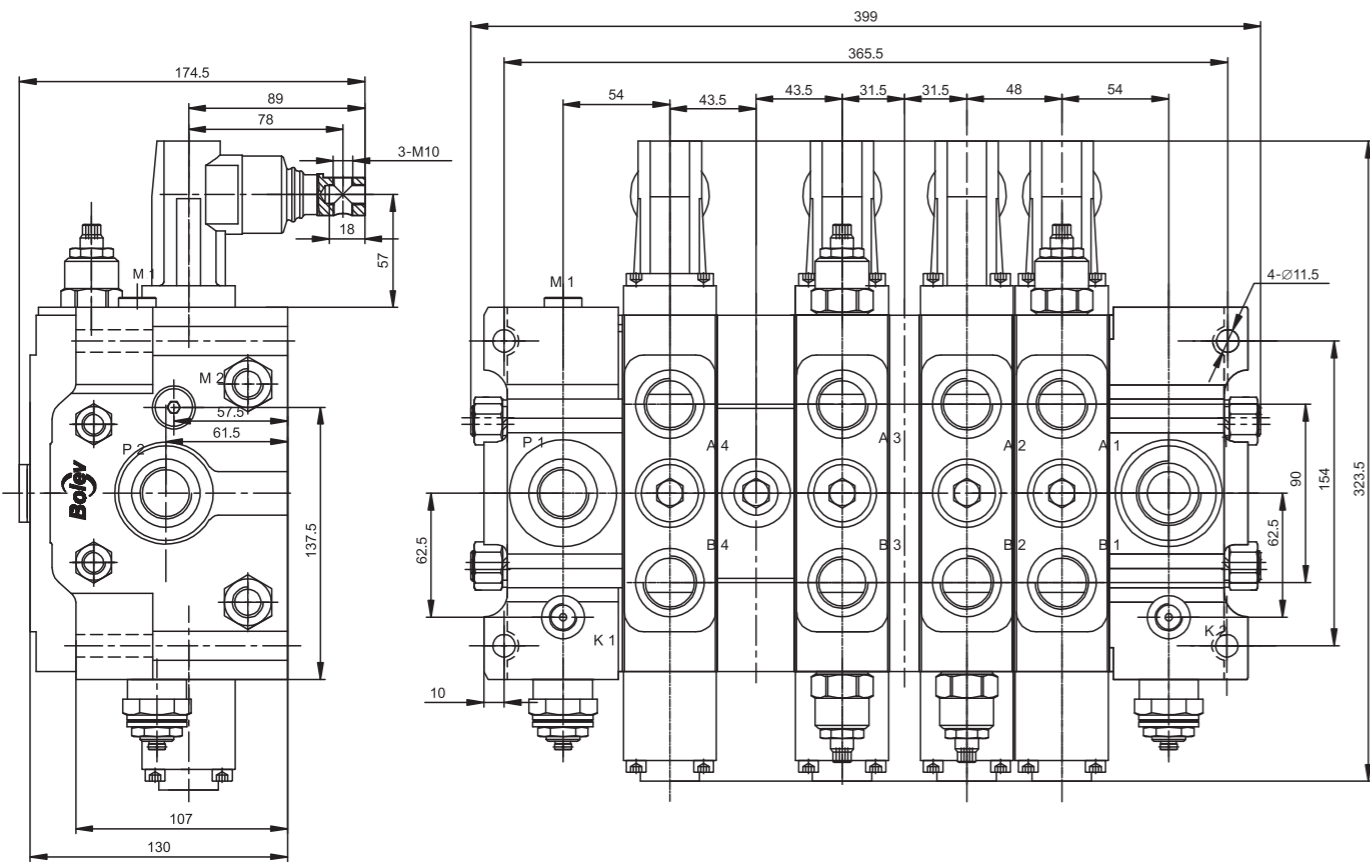
额定压力：25MPa
 额定流量：160L/min
 多路阀滑阀操纵力：F≤330N

Rated Pressure: 25MPa
 Rated Flow: 160L/min
 slide valve of Multiple branch circuit valve operating force:F≤330N;



机能符号
Hydraulic Schematic

外形尺寸 Overall Dimension



各油口尺寸 Oil Ports Size

T为:M33X2; P1、P2、A1、B1、A2、B2、A3、B3、A4、B4为:M27X2;
 M1、M2、K1、K2为:M14X1.5;

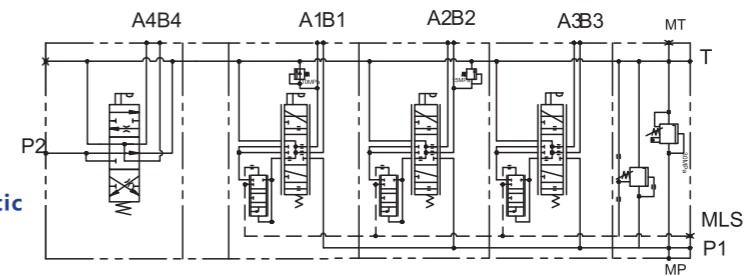
BLV-SDBF20-4/2-25 型上车多路阀

BLV-SDBF20-4/2-25 Multiple Directional Control Valve

技术参数 Technical Specifications

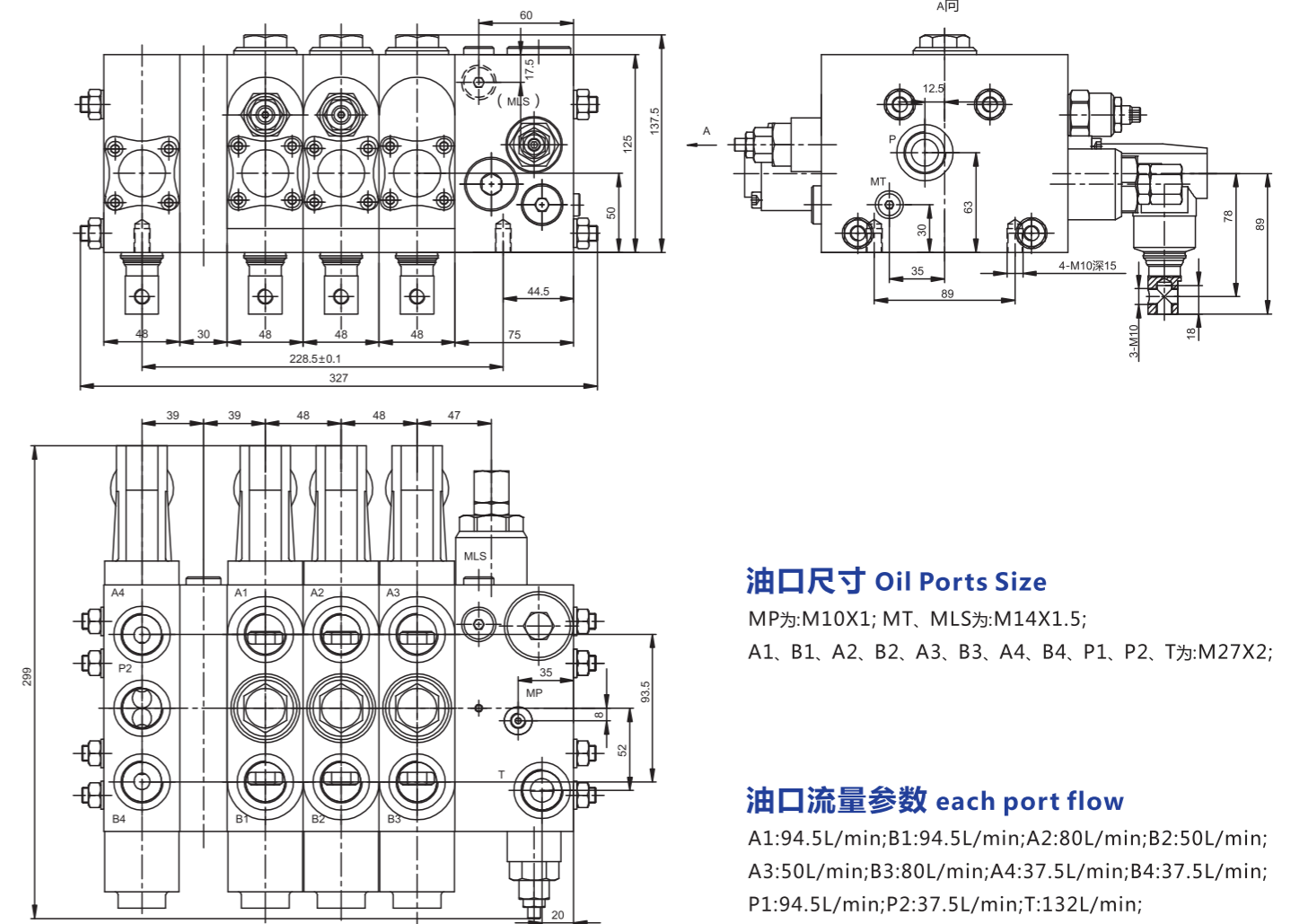
额定压力：35MPa
 额定流量：P1: 94.5L/min;P2: 37.5L/min

Rated Pressure: 35MPa
 Rated Flow: P1: 94.5L/min;P2: 37.5L/min



机能符号
Hydraulic Schematic

外形尺寸 Overall Dimension



油口尺寸 Oil Ports Size

MP为:M10X1; MT、MLS为:M14X1.5;
 A1、B1、A2、B2、A3、B3、A4、B4、P1、P2、T为:M27X2;

油口流量参数 each port flow

A1:94.5L/min;B1:94.5L/min;A2:80L/min;B2:50L/min;
 A3:50L/min;B3:80L/min;A4:37.5L/min;B4:37.5L/min;
 P1:94.5L/min;P2:37.5L/min;T:132L/min;