

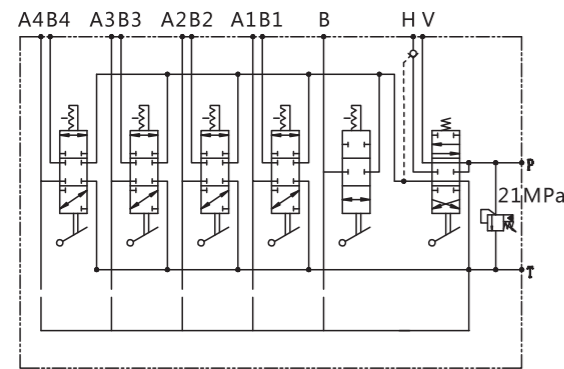
DL8Z-5NN-M12311(BLV-5SDN20/10-21)整体式下车多路阀

DL8Z-5NN-M12311(BLV-5SDN20/10-21) Mono-block Directional Control Valve For Crane Chassis

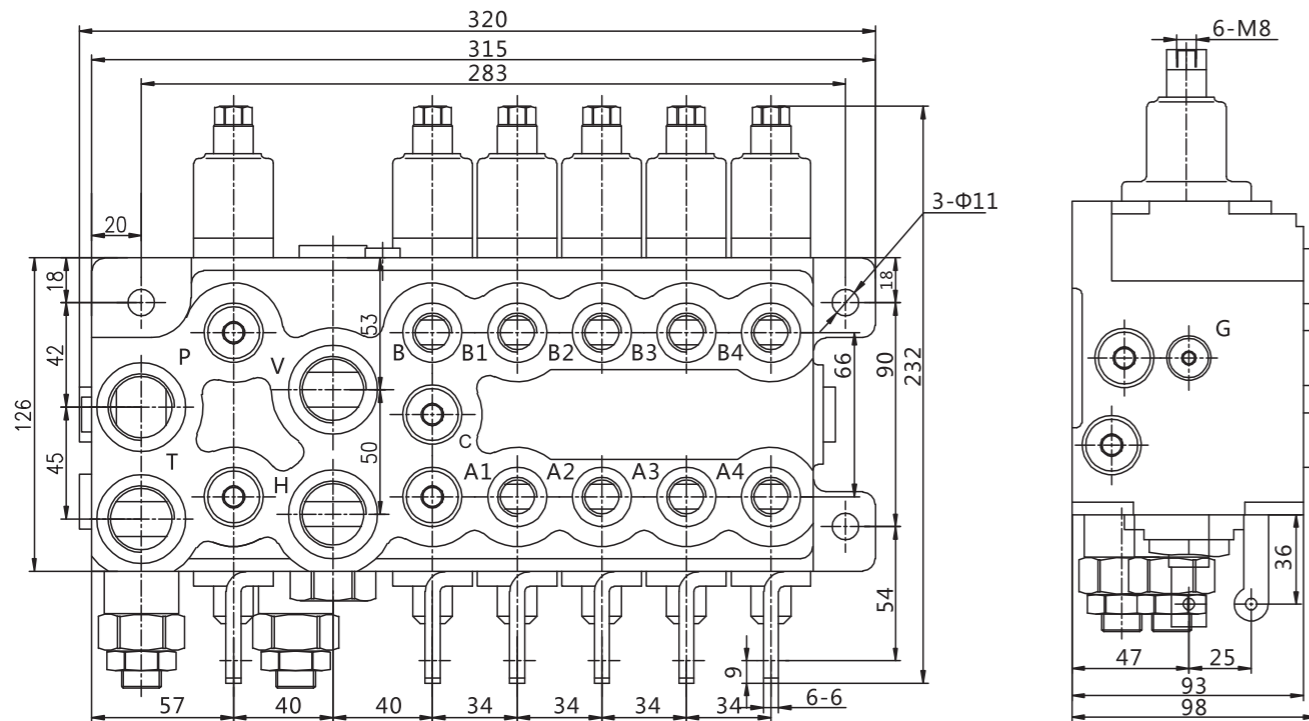
技术参数 Technical Specifications

工作压力: 21MPa; Working Pressure: 21MPa;
 额定流量P→V: 120L/min; Rated Flow P→V: 120L/min;
 额定流量P→C: 63L/min; Rated Flow P→C: 63L/min;
 适用介质: 液压油; Applicable Medium: Hydraulic Oil

图形符号 Hydraulic Schematic



外形尺寸 Overall Dimension



M22X1.5: P, T, H, V
 M16X1.5: A1~A4, B, B1~B4
 M10X1: G

DL8P-G3/8型多路换向阀

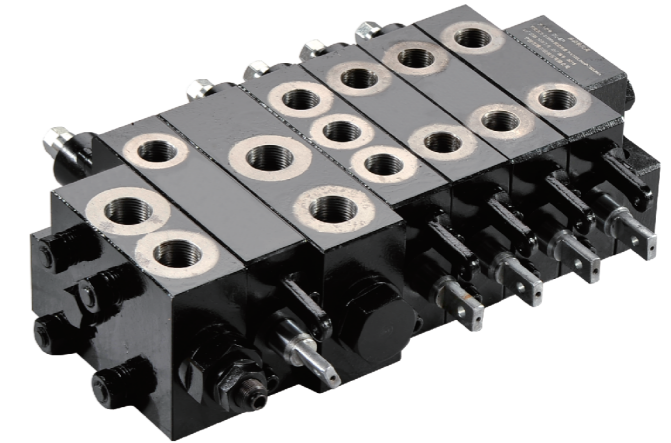
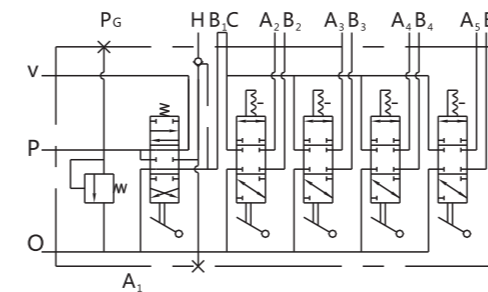
DL8P-G3/8 Multiple Directional Control Valve

技术参数 Technical Specifications

额定压力: 21 MPa
 额定流量: (P→V)100L/min
 (P→C, C→T)80 L/min

Rated Pressure: 21 MPa
 Rated Flow: (P→V)100L/min
 (P→C, C→T)80 L/min

图形符号 Hydraulic Schematic



外形尺寸 Overall Dimension

