

DL8P-*NN-M23411 型下车多路阀

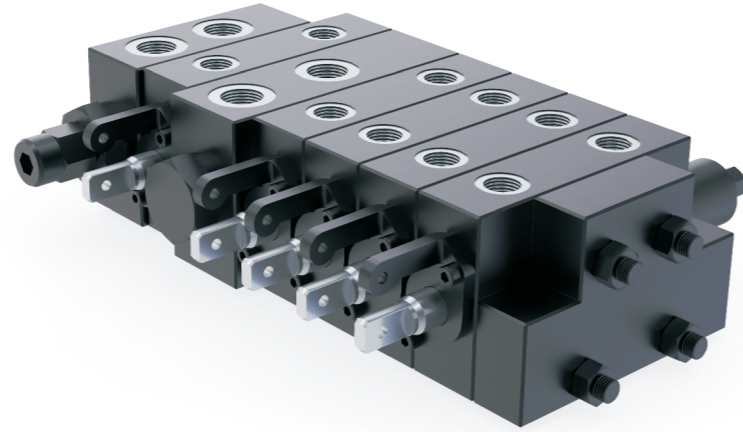
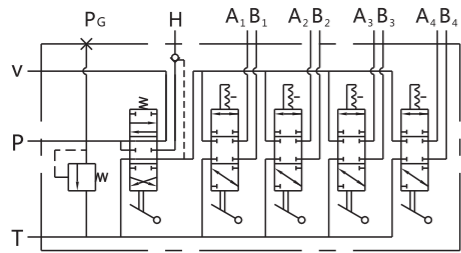
DL8P-*NN-M23411 Multiple Directional Control Valve For Crane Chassis

技术参数 Technical Specifications

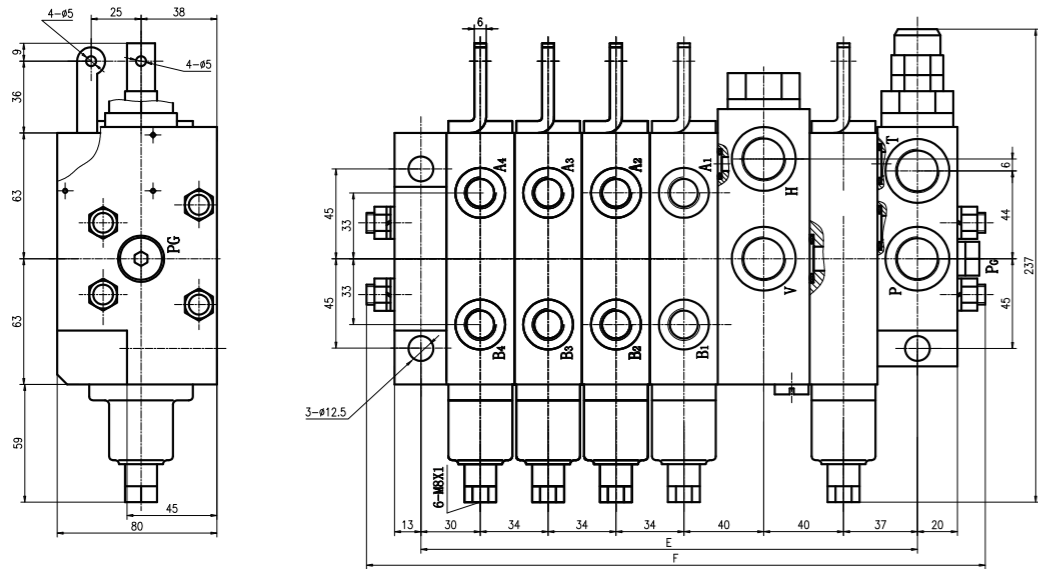
额定压力：21 MPa
 最大流量：(P→V)120L/min; (P→T)80 L/min
 适用介质：液压油

Rated Pressure: 21 MPa
 MAX. Flow: (P→V)120L/min; (P→T)80 L/min
 Applicable Medium: Hydraulic Oil

图形符号 Hydraulic Schematic



外形尺寸 Overall Dimension



型号Model	E (mm)	F (mm)
DL8P-1NN	147	208
DL8P-2NN	181	242
DL8P-3NN	215	276
DL8P-4NN	249	310
DL8P-5NN	283	344
DL8P-6NN	317	378

BLV-SDBEF18-4/1-25 电液比例多路阀

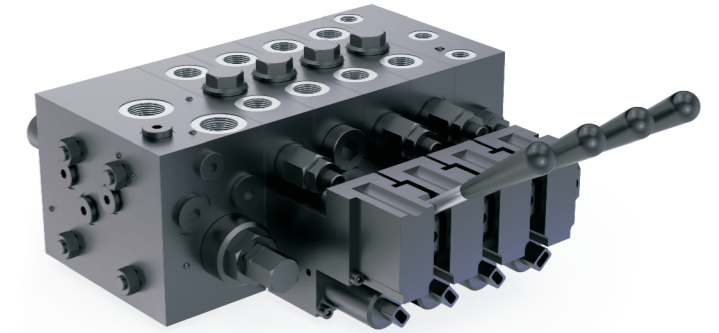
BLV-SDBEF18-4/1-25 Multiple Directional Control Valve

型号说明 Model Code

BLV - SDBEF18 - 4 / 1 - 25
 1 2 3 4 5 6

1. 公司名称：BLV-博尔法；
2. 产品型号：SDBEF-电液比例多路换向阀；
3. 公称口径：18-18mm；
4. 工作联数：1-1联..7-7联；
5. 油源数：1-单油源、2-双油源、3-三油源；
6. 额定压力：25-25MPa；

1. Company Name: BLV-BOLEV;
2. Product Number: SDBEF-Multiple Hydraulic Directional Control Valve;
3. Nominal Diameter: 18-18mm;
4. Block: 1-1..7-7;
5. Oil Source Number: 1-Single oil source, 2-Double oil source, 3-Three oil source;
6. Rated Pressure: 25-25MPa;

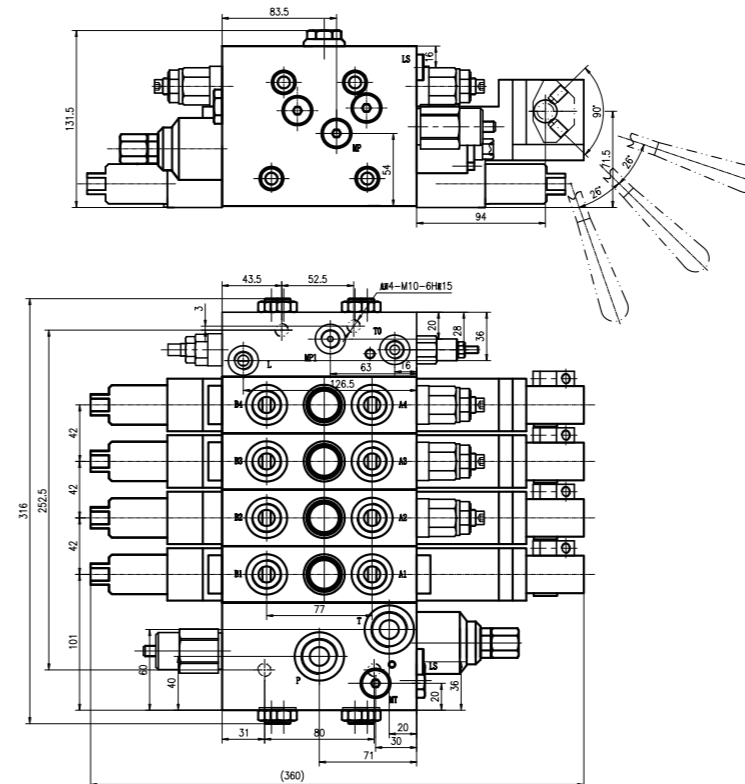


技术参数 Technical Specifications

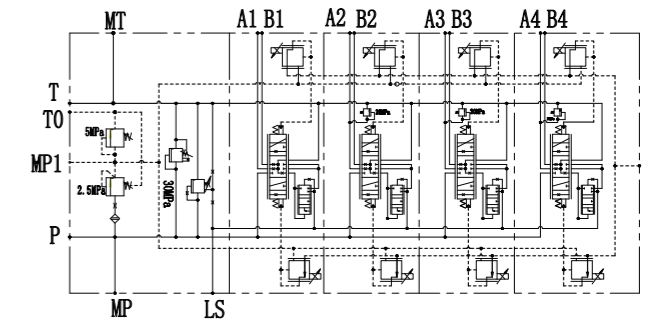
P口流量:80L/min
 额定压力：25MPa

P Port Flow Rate:80L/min
 Rated Working Pressure : 25MPa

外形尺寸 Overall Dimension



液压原理图 Hydraulic Schematic



油口尺寸：
 G3/4：P、T
 G1/2：Ai、Bi
 G1/4：LS、MP、MT、L、L0、MP1